

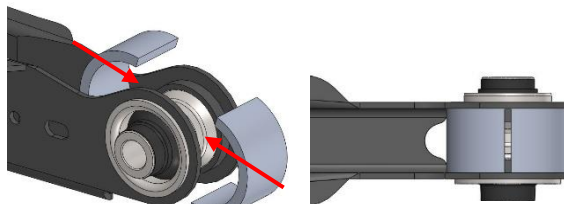


FITTING INSTRUCTIONS

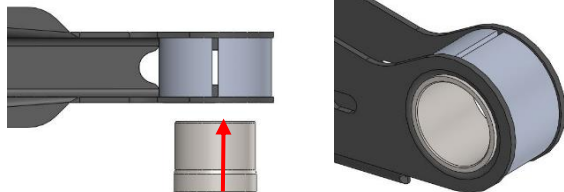
7BY - Rear Lower Rear Control Arm Inner Bush (Spring Bucket)



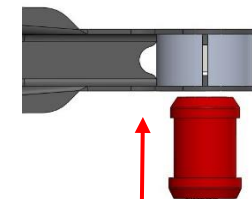
Step 1: Using the provided removal/installation tool, press out the OE bush. NOTE: Ensure the removal tool is seated before applying large pressure as this may damage the arm.



Step 2: With the installation tool still in place, press the 7BY outer shell in until flush with either side. NOTE: The arm has 2 different bore ID's so it can only fit in one direction as per the OE bush.



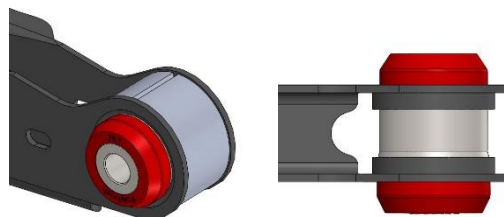
Step 3: Apply washing up liquid to the bushes leading flange and outer metal bore.



Step 4: Insert the bush in the direction shown below until fully seated. Insert inner tube.



Step 5: Remove the Installation tool



Step 6: Refit the arm to the bracketry and tighten to OE torque specifications at ride height. NOTE: Ensure suspension is settled.

If you have any questions regarding the fitment of these bushes, please give us a ring on 01978 664316 or send us an e-mail - sales@polybush.co.uk.