

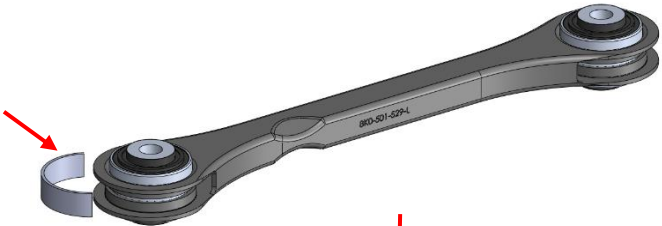


FITTING INSTRUCTIONS

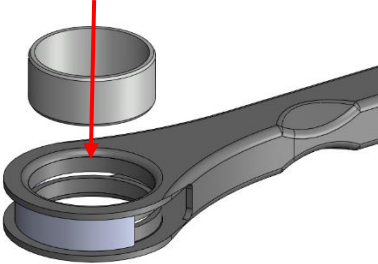
44GG - Rear Toe Arm Inner & Outer Bushes (Folded Sheet Steel)

44GG Contains
4 x 44GG Bushes
4 x 7T Inner Tubes
4 x 44GG Outer Tubes
1 x Installation/Removal Tool

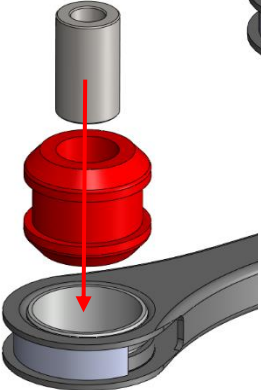
Step 1: Using the provided removal/installation tool, press out the OE bush. **NOTE:** Ensure the removal tool is seated. Incorrect placement may cause damage.



Step 2: With the installation tool in place, press the 44FA outer shell in until flush with both sides.



Step 3: Apply washing-up liquid to one of the bushes leading edges and outer metal bore.

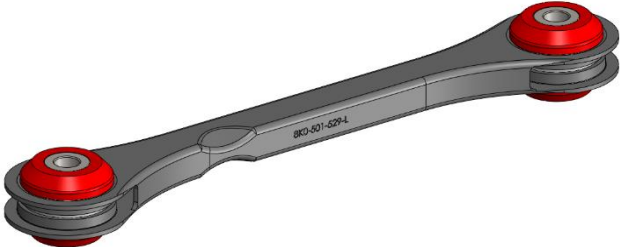


Step 4: Insert the bush in the direction shown, until fully seated. Once complete, insert the inner tube.

Step 5: Remove the Installation tool

Step 6: Re-do Steps 1-5 for the opposite end.

Step 7: Refit the arm to the car and tighten to OE torque specifications at ride height. **NOTE:** Ensure suspension is settled, prior to final torque.



If you have any questions regarding the fitment of these bushes, please give us a ring on 01978 664316.

or send an e-mail to sales@polybush.co.uk.