



**FITTING INSTRUCTIONS**

**44FW - Rear Toe Arm Bush**

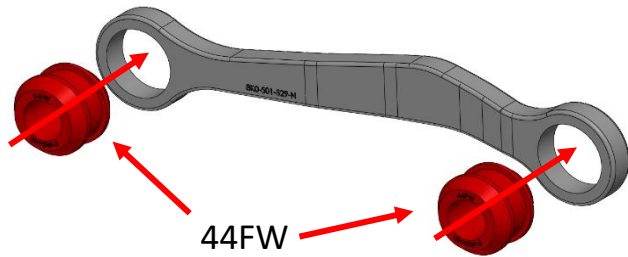
44FW Contains
4 x Bushes
4 x Inner Tubes



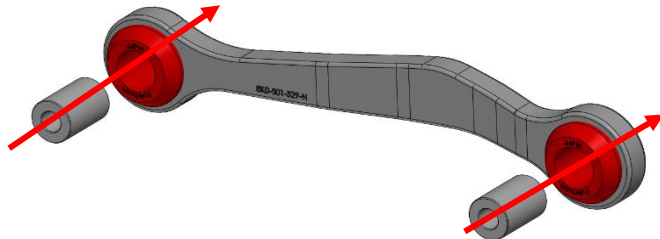
Step 1:  
Remove the existing bushes.

Step 2:  
Ensure the bore is free from sharp edges and remove any debris.

Step 2:  
Apply washing-up liquid to the leading edges of the bushes and press in using a vice or hydraulic press until the bushes are fully seated.

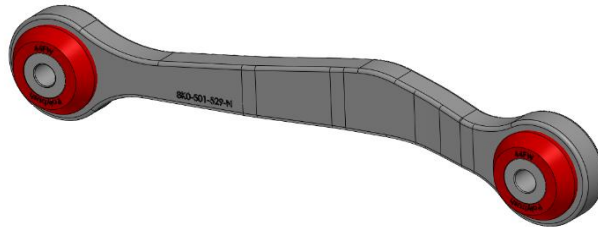


Step 3:  
Press in Inner Tubes until flush.



Step 4:  
Refit and torque to car when at ride height using the manufacturers torque settings.

Step 5:  
Follow the same process for the opposite arm.



If you have any questions regarding the fitment of these bushes, please give us a ring on 01978 664316.  
or send an e-mail to [sales@polybush.co.uk](mailto:sales@polybush.co.uk)