



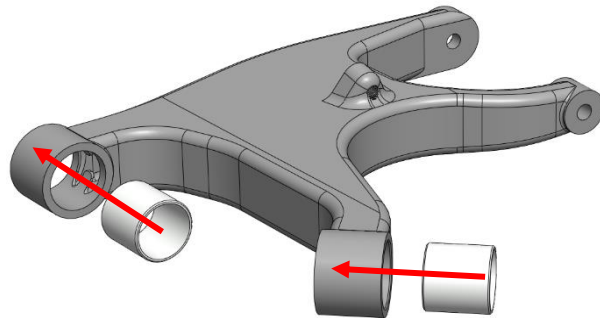
FITTING INSTRUCTIONS

44FV - Rear Lower Wishbone Bushes

44FW Contains
8 x Bushes
4 x Inner Tubes
4 x Outer Tubes

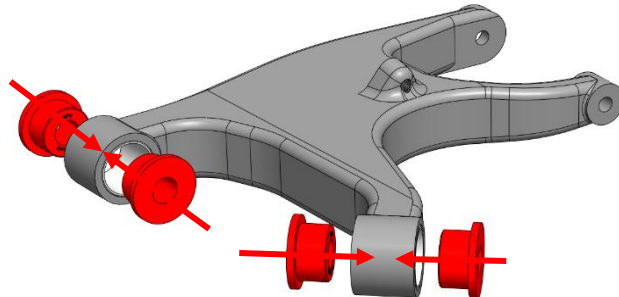


Step 1:
Remove the existing bushes.

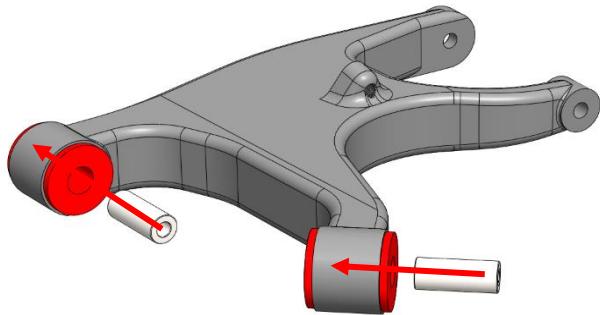


Step 2:
Ensure the bore is free from sharp edges and remove any debris.

Step 2:
Insert the outer tubes from either side until flush.



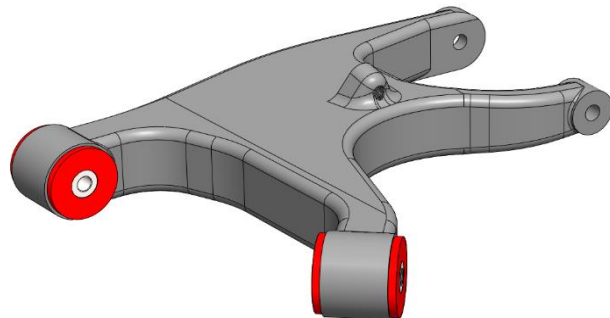
Step 3:
Push in the bushes from either side.



Step 4:
Push in the inner tubes until flush with the bushes.

Step 5:
Refit and torque to car when at ride height using the manufacturers torque settings.

Step 6:
Follow the same process for the opposite arm.



If you have any questions regarding the fitment of these bushes, please give us a ring on 01978 664316.

or send an e-mail to sales@polybush.co.uk