



FITTING INSTRUCTIONS

40DK - Rear Toe Arm & Upper Control Arm Bush

40DK Contains
 4 x Poly Pieces
 4 x Inner Tubes
 4 x Outer Tubes

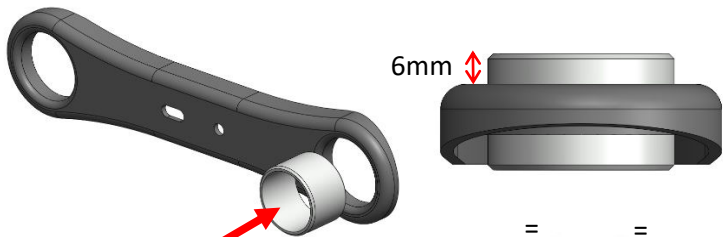


Step 1:

Remove old bush and ensure bore is clean and has no sharp edges.

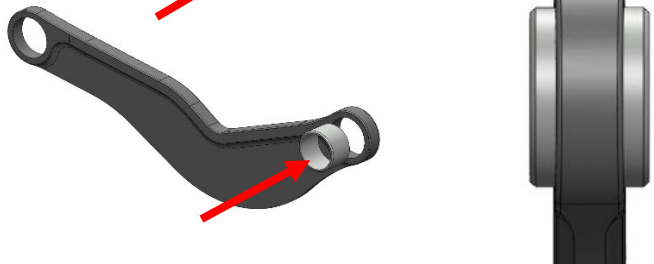
Step 2: (Toe Arm)

Insert the outer metal into the bore and press in until 6mm from the flat side of the arm.



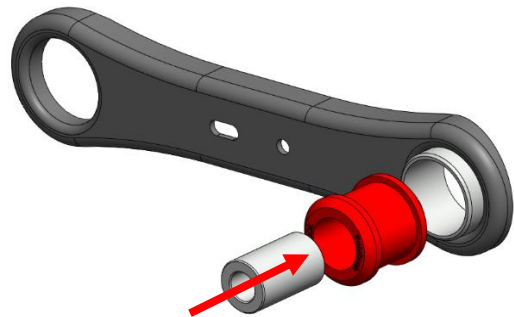
Step 2: (Upper Arm)

Insert the outer metal into the bore and press until central in the arm.
 (Distance should be equal either side).



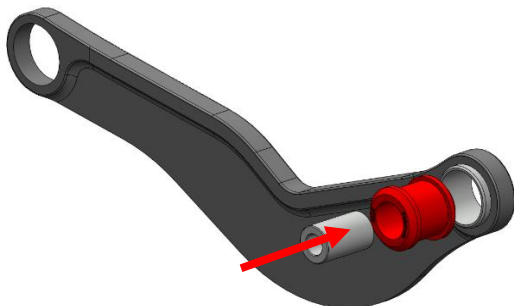
Step 3:

Apply some washing-up liquid or similar to the flange of the bush and push into the outer metal until fully seated.



Step 4:

Insert the inner tube until flush with either side of the bush.



Step 5:

Refit to the vehicle and torque to manufacturers settings.

If you have any questions regarding the fitment of these bushes, please give us a ring on 01978 664316 or send us an e-mail sales@polybush.co.uk

