



FITTING INSTRUCTIONS

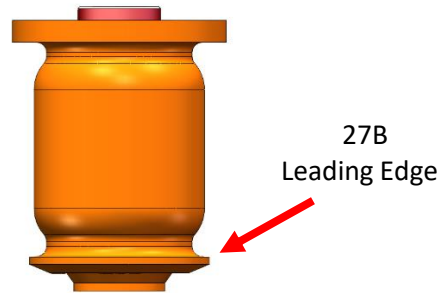
27B & 27C - Front Lower Wishbone Bushes (Front & Rear)

<u>27B Contains:</u> 2 x Poly Pieces	<u>27C Contains:</u> 2 x Poly Pieces
Please note: The tubes are bonded into the bushes.	

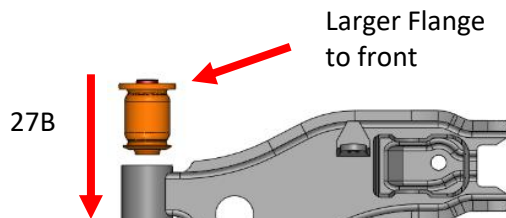


Step 1:
Remove existing bushes and ensure the bore is clear of debris and sharp edges.

Step 2:
Apply washing-up liquid or similar to the smaller leading edge of the bush of 27B.



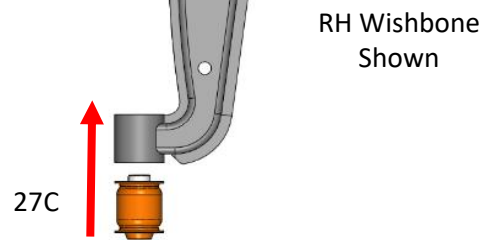
Step 3:
Insert the bush ensuring the larger flange is towards the front of the vehicle as shown in the diagram.



Step 4:
Insert the bush until fully seated ensuring the flange has come all the way through the bore.

Step 5:
Repeat for the opposite side.

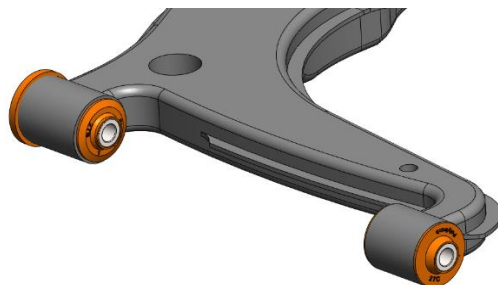
Step 6:
Apply washing-up liquid to either side of the 27C bush. This is a symmetrical bush and can be fitted either way.



Step 7:
Insert the bush until fully seated ensuring the flange has come all the way through the bore.

Step 8:
Re-fit to the vehicle and leave the nuts finger tight.

Step 9:
Ensure car is at ride height before tightening to manufactures torque settings.



If you have any questions regarding the fitment of these bushes, please give us a ring on 01978 664316 or send us an e-mail on sales@polybush.co.uk.