



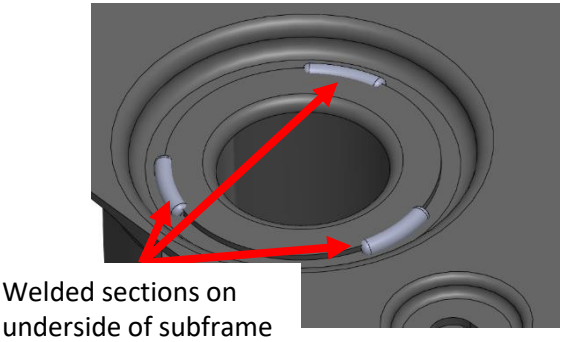
• FITTING INSTRUCTIONS •  
 SCAN THE QR CODE TO WATCH  
 OUR FITTING VIDEO AND FOLLOW  
 ALONG WITH EASE!



**47E - Front Subframe Bush**

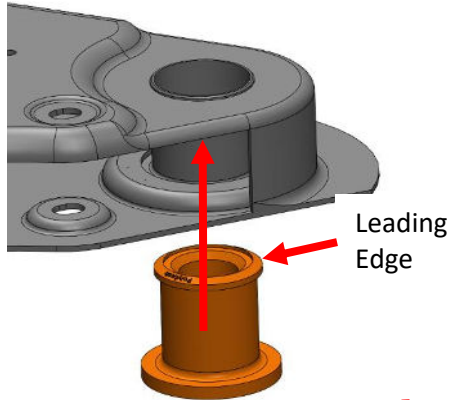
**47E Contains**  
 2 x Polyurethane Pieces  
 2 x Inner Tubes

Step 1:  
 Remove the OEM bush.  
**Note:** Ensure the secondary sleeve is **NOT** removed in this process. It is welded into the subframe in 3 spots on the underside of the subframe.

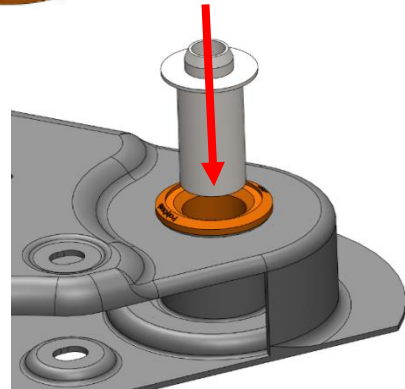


Step 2:  
 Ensure bores are clean from debris and remove any sharp edges.

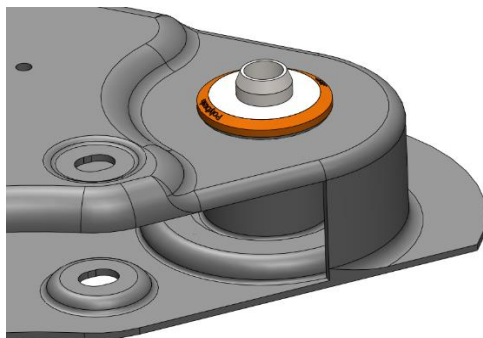
Step 3:  
 Apply washing-up liquid or similar to the leading edge of the bush.



Step 4:  
 Insert the bush from the bottom of the subframe and push in until fully seated.



Step 5:  
 Insert the inner tube from the top down as shown until it is situated in the cutout of the bush.



Step 6:  
 Refit to car and torque to manufactures settings.

If you have any questions regarding the fitment of these bushes, please give us a ring on 01978 664316 or send us an e-mail [sales@polybush.co.uk](mailto:sales@polybush.co.uk)