



• FITTING INSTRUCTIONS •
 SCAN THE QR CODE TO WATCH OUR FITTING VIDEO AND FOLLOW ALONG WITH EASE!



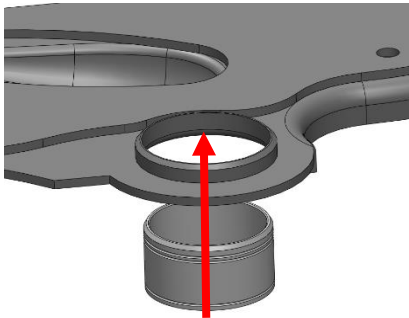
47C & 47D - Front Lower Wishbone Bushes (Front and Rear)

47C (Front) Contains:
 2 x Polyurethane Pieces
 2 x Inner Tubes
 2 x 12AP Outer Tubes

47D (Rear) Contains:
 2 x Polyurethane Pieces
 2 x Inner Tubes
 2 x 12AQ Outer Tubes

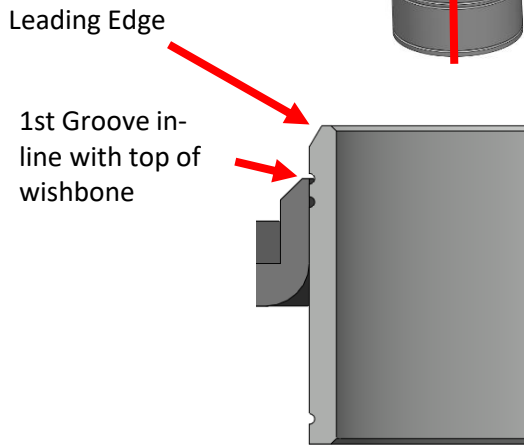
Note: 47C & 47D are designed to fit both variants of wishbone (Pressed and cast variants).

Step 1:
 Remove existing bushes and ensure bores are clean from debris and remove any sharp edges.

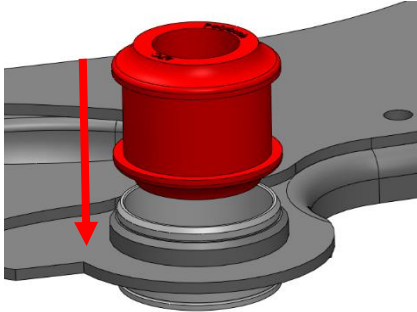


Pressed Wishbone - 47C

Step 2:
 The 12AP Outer Tube should be pressed in from the bottom side of the wishbone ensuring the leading edge is facing up. Note: The outer tube has 3 grooves and one leading edge.

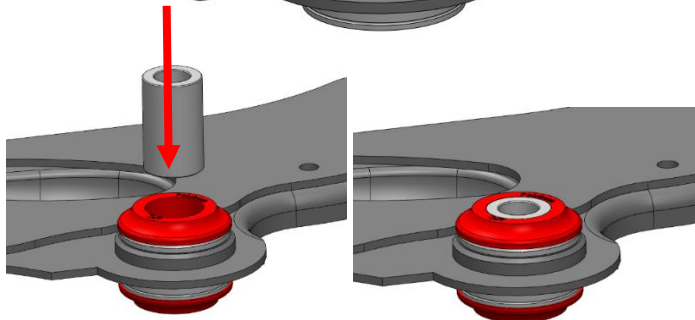


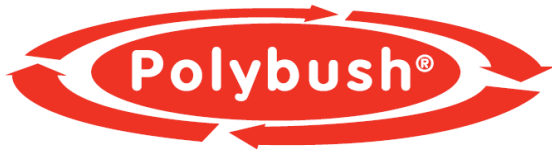
Step 3:
 Align the 1st groove closest to the leading edge with the top side of the wishbone.



Step 4:
 Using washing-up liquid or similar, coat the bushes flange and press it into the outer tube until fully seated.

Step 5:
 Insert inner tube until flush with either side of the bush.



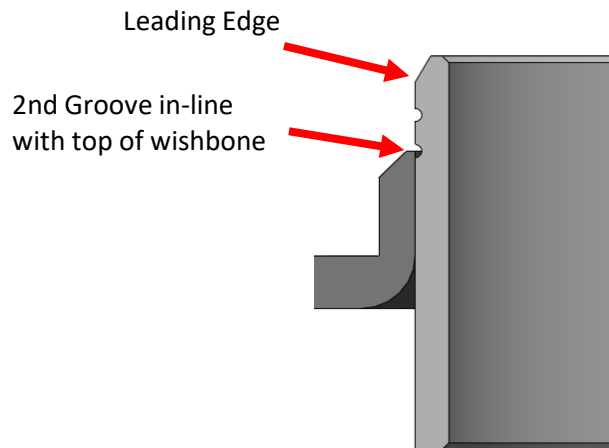
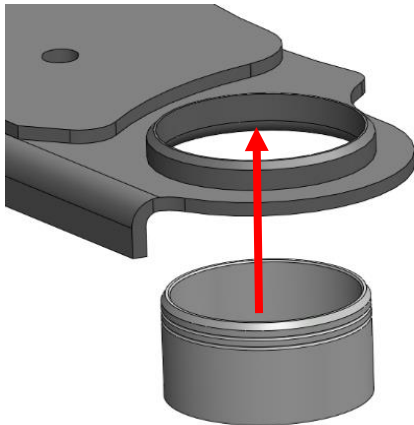


• FITTING INSTRUCTIONS •
 SCAN THE QR CODE TO WATCH
 OUR FITTING VIDEO AND FOLLOW
 ALONG WITH EASE!



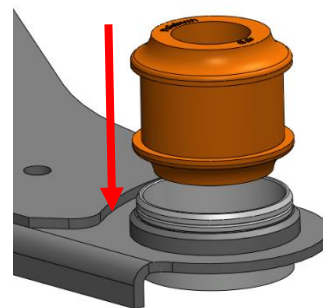
47C & 47D - Front Lower Wishbone Bushes (Front and Rear)

Pressed Wishbone - 47D



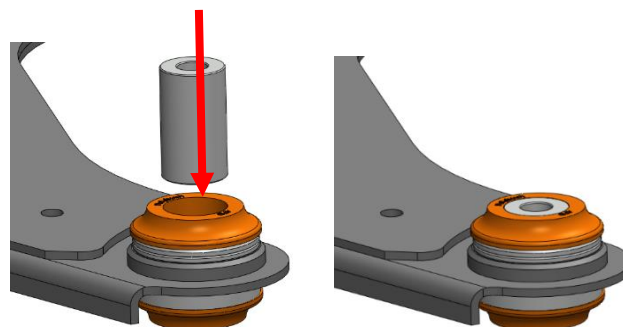
Step 2:
 The 12AQ Outer Tube should be pressed in from the bottom side of the wishbone ensuring the leading edge is facing up. Note: The outer tube has 2 grooves and one leading edge.

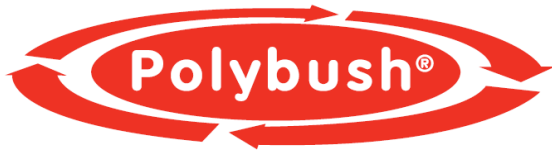
Step 3:
 Align the 2nd groove closest to the leading edge with the top side of the wishbone.



Step 4:
 Using washing-up liquid or similar, coat the bushes flange and press it into the outer tube until fully seated.

Step 5:
 Insert inner tube until flush with either side of the bush.



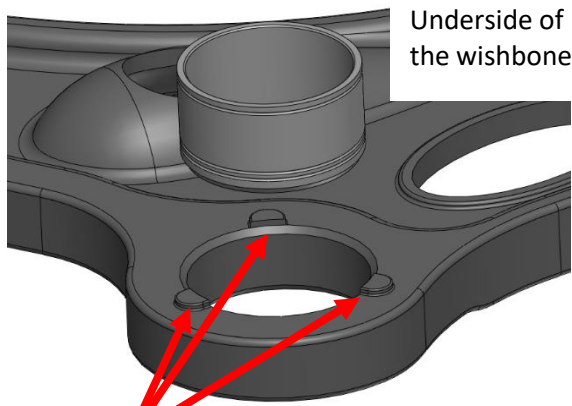


• FITTING INSTRUCTIONS •
 SCAN THE QR CODE TO WATCH
 OUR FITTING VIDEO AND FOLLOW
 ALONG WITH EASE!

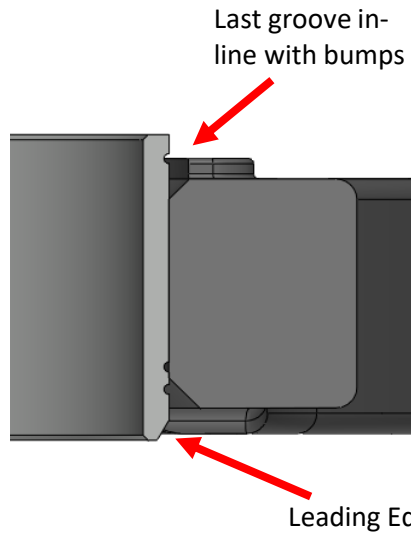


47C & 47D - Front Lower Wishbone Bushes (Front and Rear)

Cast Wishbone - 47C

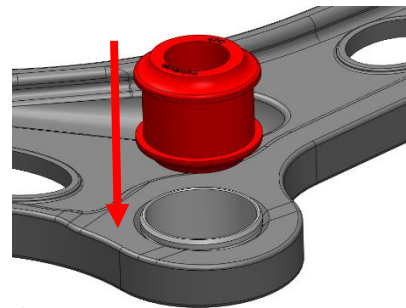


3 Bumps on underside of wishbone



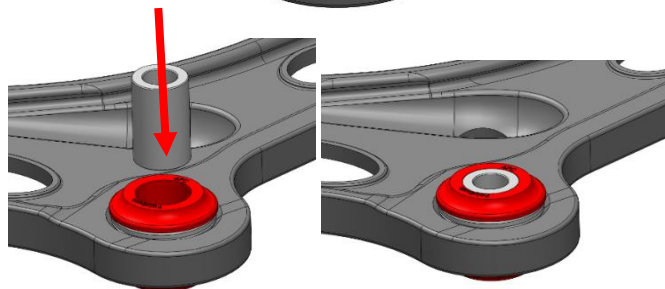
Step 2:
 The 12AP Outer Tube should be pressed in from the bottom side of the wishbone ensuring the leading edge is facing up. Note: The outer tube has 3 grooves and one leading edge.

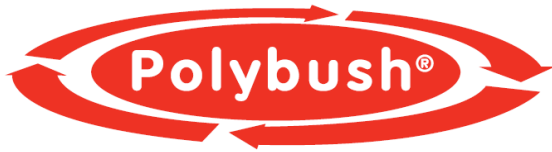
Step 3:
 Align the 3rd groove from the leading edge with the 3 bumps on the underside of the wishbone.



Step 4:
 Using washing-up liquid or similar, coat the bushes flange and press it into the outer tube until fully seated.

Step 5:
 Insert inner tube until flush with either side of the bush.



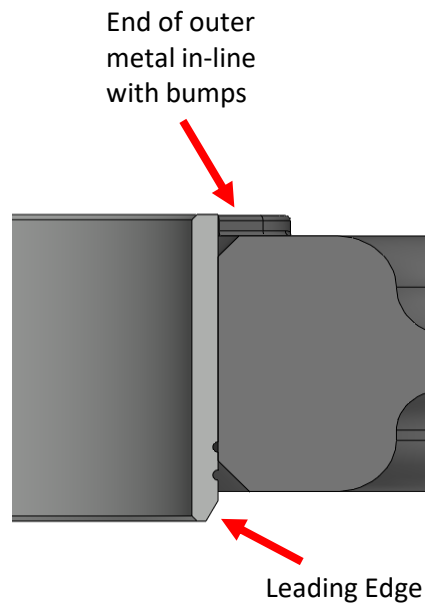
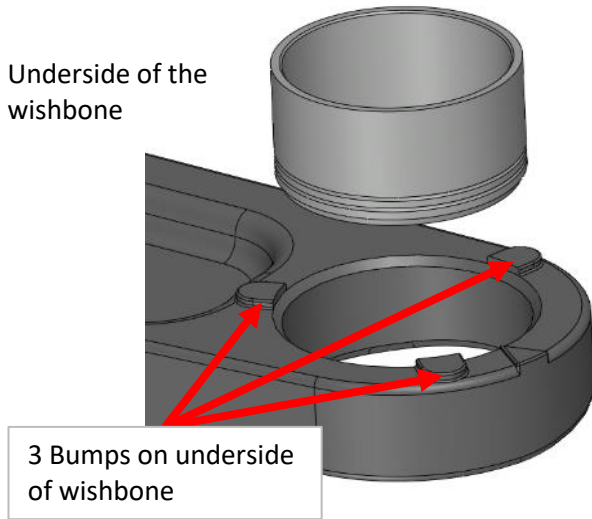


• FITTING INSTRUCTIONS •
 SCAN THE QR CODE TO WATCH
 OUR FITTING VIDEO AND FOLLOW
 ALONG WITH EASE!



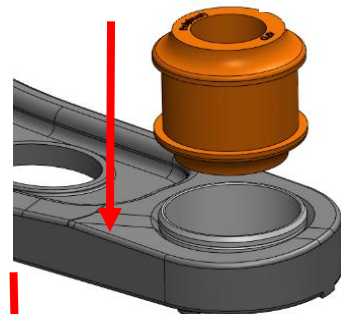
47C & 47D - Front Lower Wishbone Bushes (Front and Rear)

Cast Wishbone - 47D



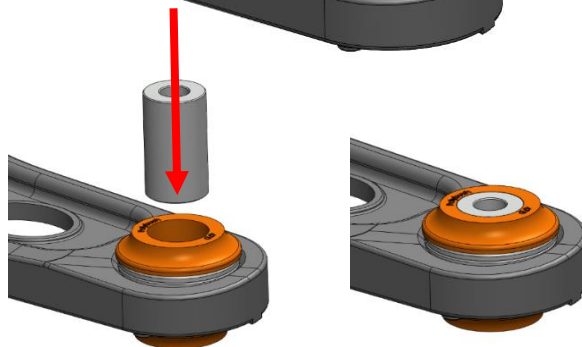
Step 2:
 The 12AQ Outer Tube should be pressed in from the bottom side of the wishbone ensuring the leading edge is facing up. Note: The outer tube has 2 grooves and one leading edge.

Step 3:
 Align the bottom of the outer metal until flush with the 3 bumps on the underside of the wishbone.



Step 4:
 Using washing-up liquid or similar, coat the bushes flange and press it into the outer tube until fully seated.

Step 5:
 Insert inner tube until flush with either side of the bush.



If you have any questions regarding the fitment of these bushes, please give us a ring on 01978 664316 or send us an e-mail sales@polybush.co.uk