



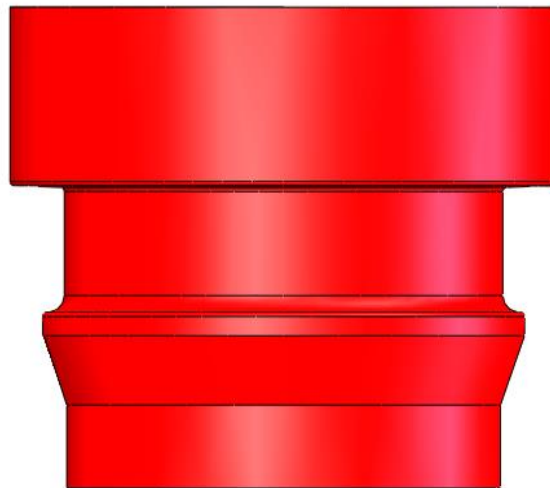
## FITTING INSTRUCTIONS

7Q

Before Fitment please ensure Suspension Arm is clean.  
The bush is to be fitted with the large flange orientated at the top of the suspension arm.  
The metal tube is then pushed into place after the bush has been fitted.

The bag for 7Q contains 2x 7Q castings and x2 PT007Q Tubes.

Top Side of Arm



Bottom Side of Arm



No grease is required. Use tyre soap or washing up liquid to aid with fitment.



If you have any questions regarding the fitment of these bushes, please give us a ring on 01978664316 or send us an e-mail on [sales@polybush.co.uk](mailto:sales@polybush.co.uk).