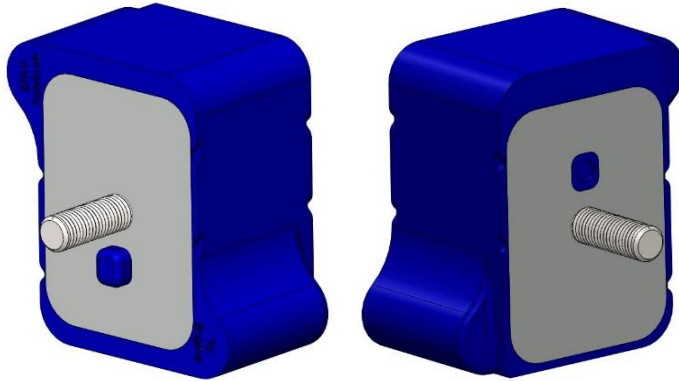
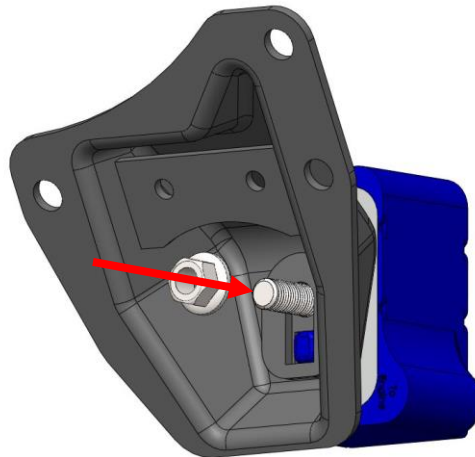



FITTING INSTRUCTIONS
27AV - Engine Mounting Bush
Step 1:

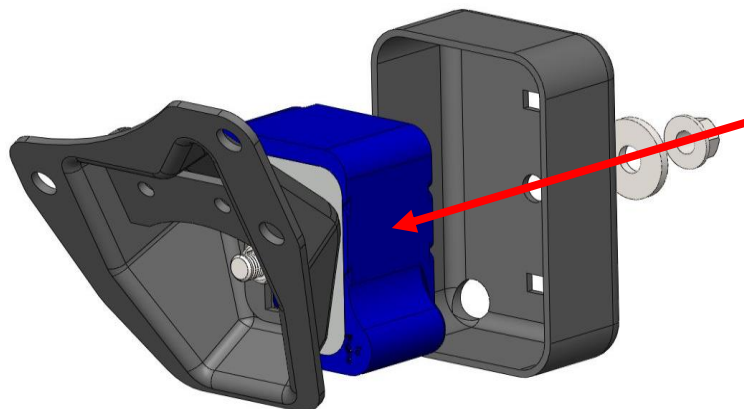
Identify the correct orientation of the bush. There are 2 different sides. One side fits to the engine and the other into the lower cup bracket. The engine side is marked via embossed text and locating nipple.


Step 2:

Insert the engine side into the bracket with the nipple locating into the square hole. Torque the nut to factory settings whilst ensuring the bush remains parallel.


Step 3:

Insert lower cup bracket onto bush ensuring the drain holes are located on the bottom. Tighten the nut to factory settings. The Anti-Rotation Tabs will ensure the bush sits square when torquing the nut.



Step 4: Refit Engine Mounts to car to factory torque settings.

If you have any questions regarding the fitment of these bushes, please give us a ring on 01978 664316 or send us an e-mail on sales@polybush.co.uk.