

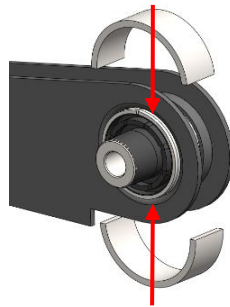


**FITTING INSTRUCTIONS**

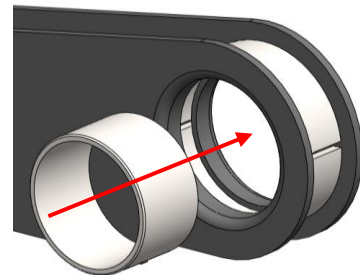
**44FC - Rear Spring Bucket Inner Bush**

|                                |
|--------------------------------|
| 44FC Contains                  |
| 2 x 44FC Bushes                |
| 2 x 44FA Inner Tubes           |
| 2 x 44FC Outer Tubes           |
| 2 x Installation/Removal Tools |

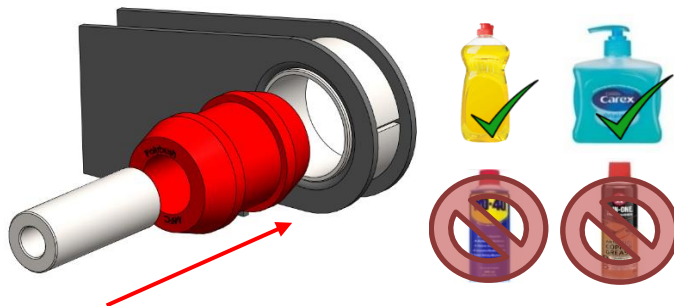
Step 1: Using the provided removal/installation tools, press out the OE bush. **NOTE:** Ensure the removal tools are seated. Incorrect placement may cause damage.



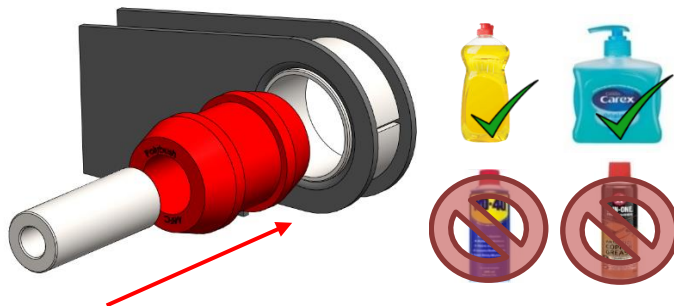
Step 2: With the installation tool in place, press in the 44FA outer shell in until flush with both sides.



Step 3: Apply washing-up liquid to one of the bushes leading edges and outer metal bore.

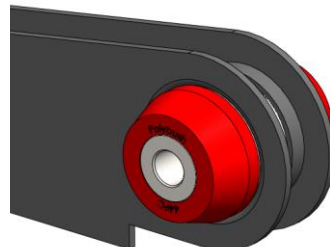


Step 4: Insert the bush in the direction shown, until fully seated. Once completed, insert the inner tube.



Step 5: Remove the Installation tools

Step 6: Refit the arm to the car and tighten to OE torque specifications at ride height. **NOTE:** Ensure suspension is settled, prior to final torque.



If you have any questions regarding the fitment of these bushes, please give us a ring on 01978 664316.

or send an e-mail to [sales@polybush.co.uk](mailto:sales@polybush.co.uk).